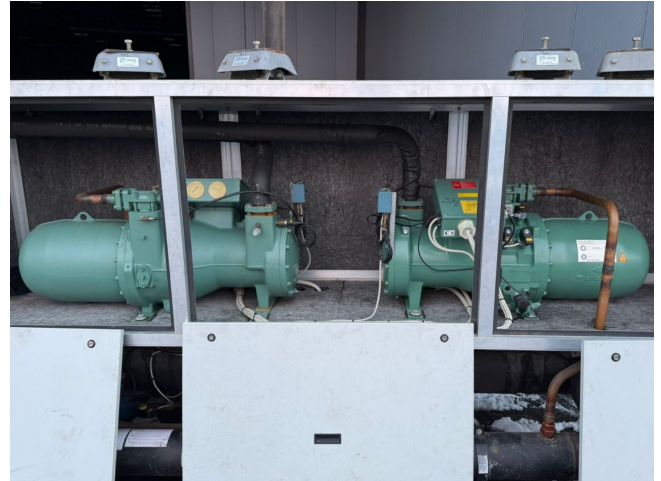


Bitzer CSH6551-35Y-40D

Specifications

Marka	Bitzer
Typ	CSH6551-35Y-40D
Czynnik chłodzący	Freon
kW at +10°C/+40°C	104,7
kW at 0°C/+40°C	70,2
kW at -5°C/+40°C	56,4
kW at -10°C/+40°C	44,6
Rozładunek	✓
Kontrolka wydajności	✓
Okno widokowe	✓
m ³ / h	137 m ³ /h at 50 Hz & 165 m ³ /h at 60 Hz
Uwagi	Y.o.b. 2008
Waga kg.	314 kg
Stock	3



Description

Used Bitzer CSH6551-35Y-40D

Used Bitzer CSH6551-35Y-40D semi-hermetic screw compressor on Freon with a sight glass. The compressor has a displacement of 137 m³/h at 50 Hz & 165 m³/h at 60 Hz.

*Why choose for HOSBV? We are not only the largest used refrigeration specialist in Europe, but also, we deliver all equipment including an extensive test, warranty and an industrial cleaning. *Optionally we can also perform a new paint job and arrange the logistics.

